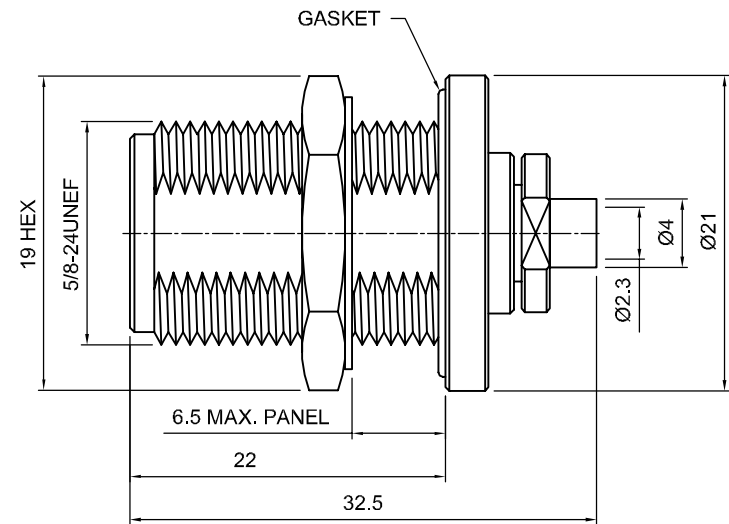
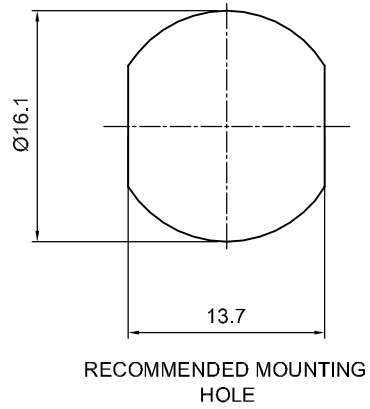



Tolerances 1-20=+/-0.2 20-30=+/-0.3 30-40=+/-0.4 40-50=+/-0.5 50-100=+/-0.75 100-300=+/-1.5 Angles=+/-1 Dimensions are in Millimeters	Revisions	Approved	Date
	Description/Approved/Date	M.H.	
		Checked	Date
		M.H.	
	Drawn	Date	
	K.R.E.	02/04/02	
	NOTES (plating thickness in micro-inches): 1. Per QQ-B-626 2. Per QQ-S-764 3. Per QQ-C-530 4. Per QQ-B-750 5. Per MIL-P-19468 6. Per ZZ-R-765 7. Per WW-T-799 8. Gold pl. 5 min. over nickel pl. 50 min. over copper strike 9. Nickel pl. 100 min. over copper strike 10. Per QQ-P-35 11. Gold pl. 5 min. over nickel pl. 50 min. over copper strike		



ITEM	MATERIAL	FINISH	 Lighthouse Technologies, Inc. 5640 Kearny Mesa Road, Suite N San Diego, California 92111 Part Number: LTI-NSF33rNT-086
Connector Body	Brass, Note 1	Nickel, Note 9	
Center Contact: Female	Phosphor Bronze, Note 4	Gold, Note 11	
Insulation	Teflon, Note 5	None	
Ferrule	--	--	
Gasket	Silicone Rubber, Note 6	None	
Hex Nut	Brass, Note 1	Same as body	
Lock Washer	Same as Body	Same as body	
Description			N type bulkhead jack for semi-rigid .086".
Description			Nickel plated brass body, Teflon dielectric.
Scale	Drawing No.	File Name	
2:1		NSF33-086	