

All components used in this connector conform to RoHS standards.

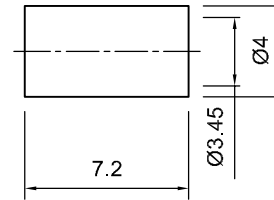
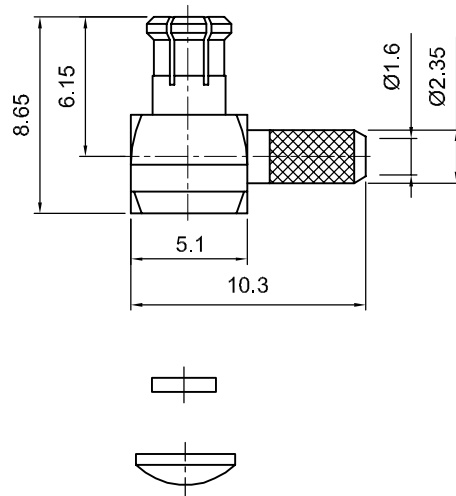
Approved by:
Date:



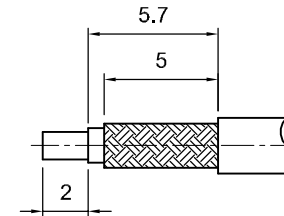
Tolerances
1-20=+/-0.2
20-30=+/-0.3
30-40=+/-0.4
40-50=+/-0.5
50-100=+/-0.75
100-300=+/-1.5
Angles=+/-1

Dimensions are in Millimeters

Revisions Description/Approved/Date	Approved M.H.	Date 09/04/03
	Checked M.H.	Date 09/04/03
	Drawn K.R.E.	Date 09/04/03
NOTES (plating thickness in micro-inches):		
1. Per QQ-B-626	5. Per MIL-P-19468	9. Nickel pl. 100 min. over copper strike
2. Per QQ-S-764	6. Per ZZ-R-765	10. Per QQ-P-35
3. Per QQ-C-530	7. Per WW-T-799	11. Gold pl. 30 min. over nickel pl. 50 min. over copper strike
4. Per QQ-B-750	8. Gold pl. 5 min. over nickel pl. 50 min. over copper strike	



RECOMMENDED STRIPPING DIMS



ITEM	MATERIAL	FINISH
Connector Body	Brass, Note 1	Gold, Note 8
Center Contact: M	Brass, Note 1	Gold, Note 11
Insulation	Teflon, Note 5	None
Ferrule	Annealed Copper, Note 7	Same as body
Gasket		
Hex Nut		
Lock Washer		



Lighthouse Technologies, Inc.
5640 Kearny Mesa Road, Suite N
San Diego, California 92111

Part Number:
LTI-MXLM11GT-316

Description
MCX right angle crimp plug for RG 316 cable group.

Gold plated brass body, Teflon dielectric.

Scale 1:1	Drawing No. MXLM11-316	File Name MXLM11-316
--------------	---------------------------	-------------------------