

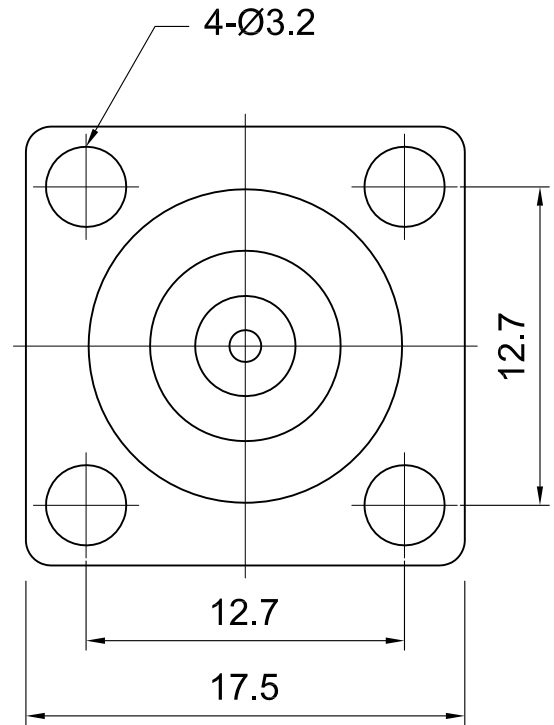
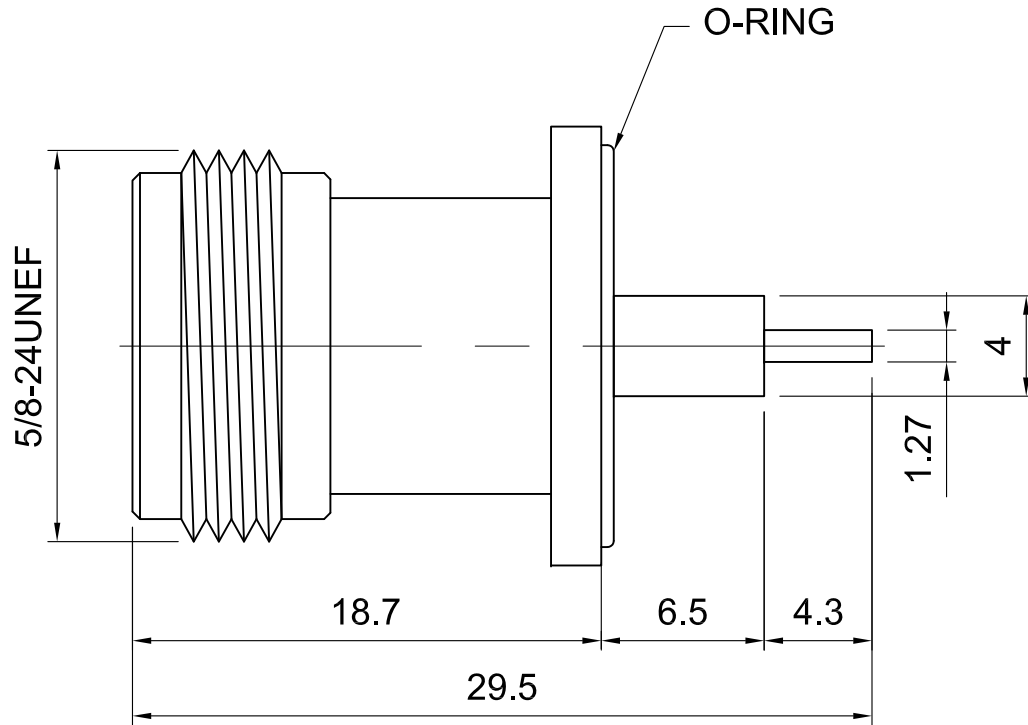


**Tolerances**

- 1-20=+/-0.2
- 20-30=+/-0.3
- 30-40=+/-0.4
- 40-50=+/-0.5
- 50-100=+/-0.75
- 100-300=+/-1.5
- Angles=+/-1

**Dimensions are in Millimeters**

Revisions Description/Approved/Date	Approved	Date
	Checked	Date
	Drawn RDP	Date 06/09/2010
NOTES (plating thickness in micro-inches): 1. Per QQ-B-626 2. Per QQ-S-764 3. Per QQ-C-530 4. Per QQ-B-750 5. Per MIL-P-19468 6. Per ZZ-R-765 7. Per WW-T-799 8. Gold pl. 50 min. over nickel pl. 50 min. over copper strike 9. Nickel pl. 100 min. over copper strike 10. Per QQ-P-35 11. Gold pl. 30 min. over nickel pl. 50 min. over copper strike		



ITEM	MATERIAL	FINISH
Connector Body	Brass, Note 1	Nickel, Note 9
Center Contact: Female	Phosphor Bronze	Gold, Note 11
Insulation	Teflon, Note 5	None
Ferrule	-	-
Gasket	Silicone Rubber, Note 6	None
Hex Nut	-	-
Lock Washer	-	-

**Lighthouse Technologies, Inc.**  
 9511 RidgeHaven Ct, Suite B  
 San Diego, California 92123

Part Number:  
**LTI-7NSF92oDNT**

Description		
75ohm N panel mount jack with solder post and extended dielectric		
with O-ring. Ni plated brass body with Teflon dielectric. RoHS Comp.		
Scale	Drawing No.	File Name
2:1		7NSF92oDNT